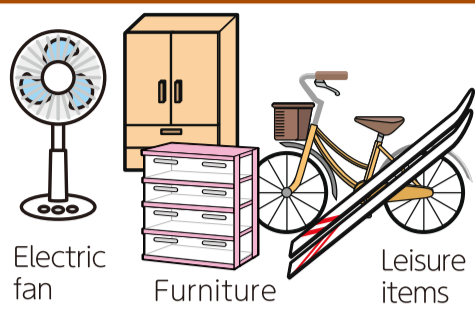


Oversized Household Waste (by reservation only)

Example Items

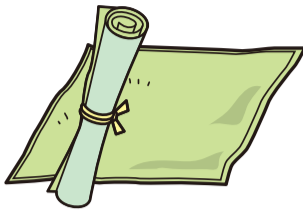
Items that don't fit in Official City Trash Bags



Electric fan Furniture Leisure items

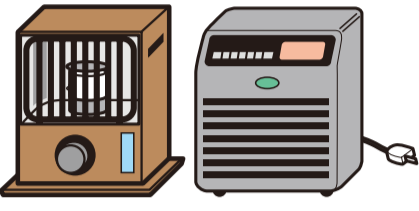
Large textiles

Items longer than 50cm



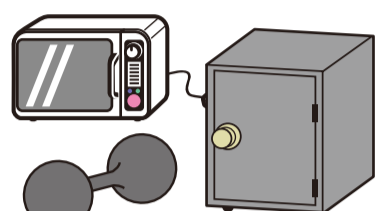
Carpets

Fire hazards



Heaters (kerosene, fan)
*Kerosene & batteries MUST be removed prior to disposal.

Hard materials



Microwaves, safes, dumbbells, etc.

Only items that can be lifted by two adults or lighter.
(※No collection for commercial waste.)

Disposal (by reservation only)

① Make a reservation through the Oversized Waste Reception Center

Internet

Available 24/7. Search on the Niigata City website!

Online service

search

Make a reservation through Oversized Waste Online.



※ Some items are not available through online reservation.

※ It takes several days from reservation application to collection day. No collection on weekends and holidays.

Tel

Tel: 025-290-5353

※ Fax: 025-290-5371 For people with disabilities only

Hours: 9am-5pm, Mon.-Sat. (closed on holidays and Dec. 29-Jan. 3)

※ Please note that the line may be busy during certain hours.

※ Only call if your item requires reservation by phone, otherwise please make a reservation online.

② Purchase Oversized Waste Disposal Stamps

Please purchase Oversized Waste Disposal Stamps (assigned at the time of reservation) at Niigata City offices, select supermarkets, and convenience stores. Stamps are available in 100yen, 200yen, 300yen & 500yen amounts

Stamps



③ Take Waste to the Collection Site

Write your name or reservation number on the stamp and put it somewhere easily visible. Bring trash to the designated collection point before 8am on the pick-up day.

※ Trash will only be collected if marked with a disposal stamp.

※ Trash can't be collected from inside your house or apartment. ※ Collected at your residential collection site only.



Bulk Disposal of Household Waste (moving, cleaning)

Dispose by taking items directly to your local waste management plant

- Processing fee: 60yen/10kg (to be paid at the facility, no need for Official City Trash Bags or Oversized Waste Disposal Stamps)
- Drop off sites depend on where you live. Please check the city website or the "Trash Sorting Encyclopedia 「ごみ分別百科事典」"



How to drop off waste by yourself

Use a city-designated collection service

- Collection fees depend on waste amount, type, location, and other factors.



List of collection services



Waste Not Collected by the City of Niigata (will not be collected from collection sites)

Items covered by the Home Appliance Recycling Law

(Manufacturers will recycle items)



Disposal

■ Recycling by retailers and shops

Ask the retailer that you bought the appliance from, or from which you plan to buy a new one. (Collection fees vary by retailer.)

■ Dropping off your appliance at the designated site by yourself

Check the name of your appliance's manufacturer. (Also check the screen size for TVs and inner capacity for refrigerators & freezers.)

※ Be sure to pay the necessary recycling fees at a post office prior to taking your appliances to the site. (Post office processing fees apply)

Take your items to the sites below. Do not attach the recycling stamp.



Recycling fees listed here

Delivery Site	Howa Shoji Niigata Branch Office (株)豊和商事 新潟支店	Nippon Express Niigata Branch Bandai Depot 日本通運(株)新潟支店 万代デポ
Address & Tel	2-2-63 Misakicho, Chuo Ward ☎025-284-0131	3-5-26 Bandai, Chuo Ward ☎025-244-9121
Hours	Hours vary. Please confirm beforehand.	

■ Collection Services

If you can't take your appliances to the drop off site, please consult a professional collection service.

List of collection services



Personal computers

(Manufacturers collect and recycle)



Products with this mark can be collected & recycled free of charge.

Recyclable Parts

Desktop computer modems, CRT monitors, laptops, LCD monitors, etc. Standard auxiliary appliances are only collected together with PCs. (Mouses, keyboards, speakers, cables, etc.).

Collection is not offered for...

Word processors, printers/scanners, external drives & other peripherals; mouses, keyboards, and other accessories without PCs.

If it can fit in Official City Trash bags
→ Non-Burnable,
If not → Oversized Household Waste

How to Recycle

■ Please contact the manufacturer to have these items recycled.

For inquiries on manufacturer contact information or the collection of self-built computers: PC3R Promotion Association

☎ 03-5282-7685 HP: <https://www.pc3r.jp>

Small household electronic recycling sites or courier collection are also available.

Recycling sites

For information regarding requirements and collection sites, see the city website.



Collection by courier

For more information, visit the ReNet Japan (リネットジャパン) website.



Please contact retailers to dispose of the following items



Fire Extinguisher Recycling Promotion Center Corp.

☎03-5829-6773



Fire extinguishers

Hours: 9am-12pm,
1pm-5pm
(closed on weekends and holidays)
<https://www.ferpc.jp>

Motorcycle Recycling Call Center

☎050-3000-0727

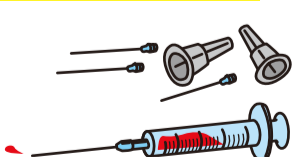


Scooters, motorbikes

Hours: 9:30am-5pm
(closed on weekends and holidays)
※ Manufacturers and retail shops collect and recycle junked bikes
Free to recycle

Please return to your medical care facility or pharmacy

(Including insulin pens and tools for measuring blood sugar, etc.)



Needles

Waste Resulting from Contract Work

Have the contractor dispose of any waste resulting from construction (ex: gas piping/appliances, bath tubs, concrete, fences, etc).

Commercial Waste (waste created by business activity cannot be disposed of at collection sites)

Commercial waste is the responsibility of the business that created it. Businesses must dispose of waste properly by requesting pick-up from a designated collection service.